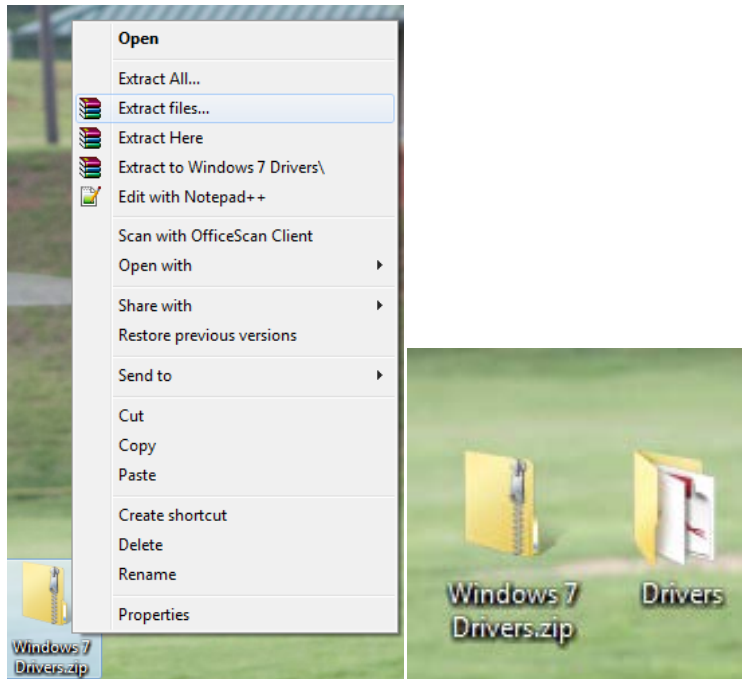
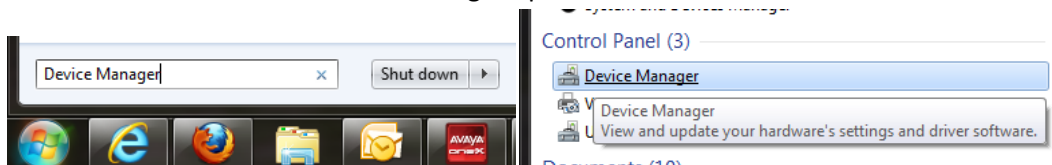


TEC COM Kit - Windows 7 Installation

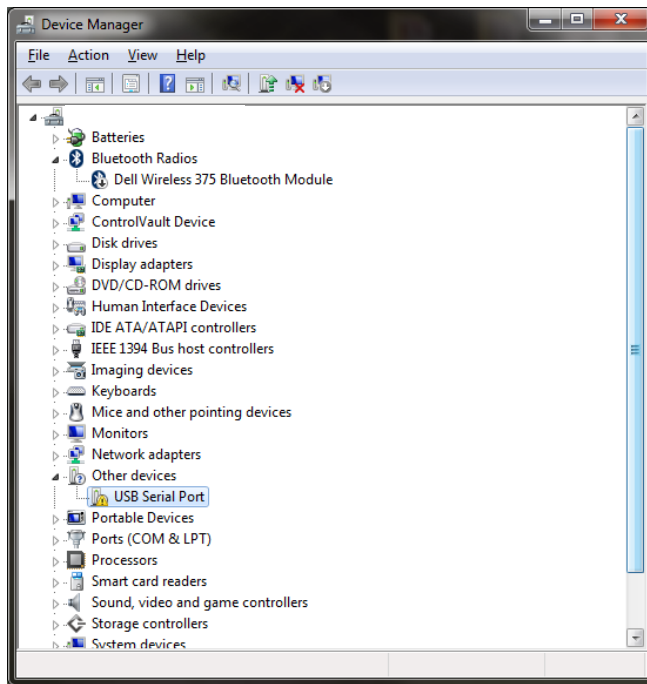
1. Plug USB TEC Com Kit into PC USB port
2. Unzip the Windows 7 Drivers to desktop so that the Drivers folder is accessible.



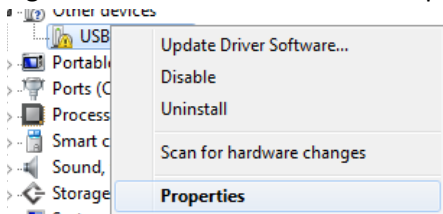
3. Open the Device Manager. Click "Start" to open the menu and type "Device Manager" into the search box and select the Device Manager option under Control Panel.



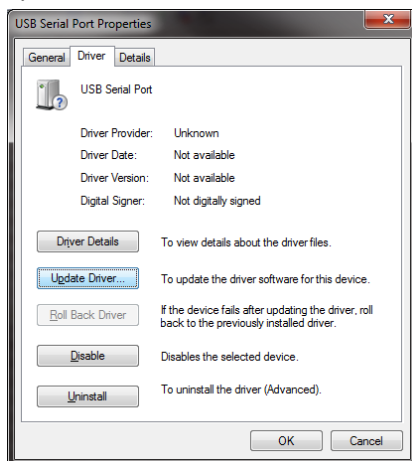
- Once the Device Manager is open, find the TEC COM cable on the list of devices. Click the arrow to the left of the *Other Devices* heading to expand the devices below. You should see the cable listed as *USB Serial Port* or *P/N 13376947*.



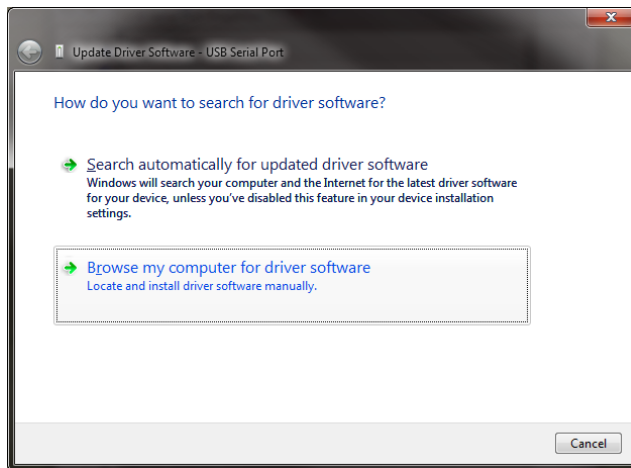
- Right click on the device and select properties.



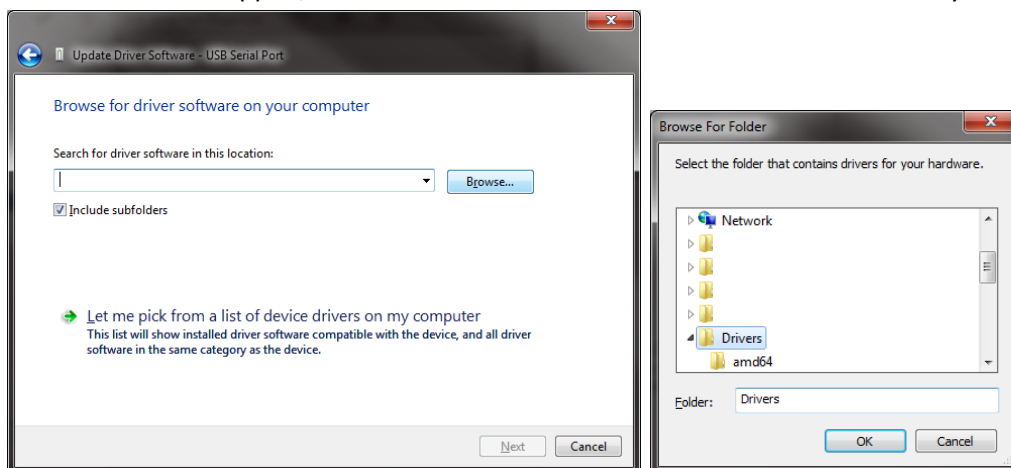
- In the Properties Window, select the tab labeled Drivers at the top. On this page, select the *Update Driver...* button.



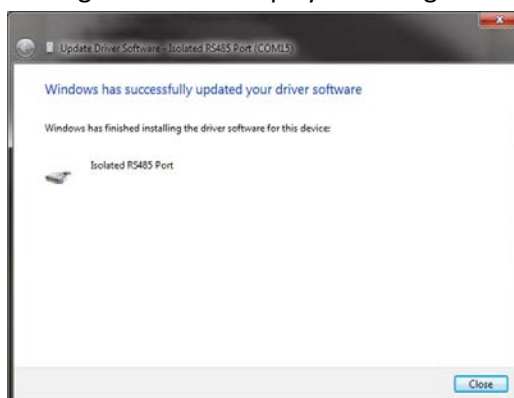
7. A driver installation utility will pop up to assist in locating the driver files. Choose the *Browse my computer for driver software* option.



8. Choose the Browse option to specify the directory that the Drivers folder is located. This is the folder that was unzipped/extracted earlier. Select the Drivers folder located on your desktop



9. Click *Next* and the installer will use the necessary drivers. Once completed, the following message should be displayed stating that *Isolated RS-485 Port* was correctly installed.



10. If this is not the message that you received after installing the drivers, there is a chance that steps 5-9 will have to be repeated. If the installed cable is *CIUSOPTL4*, then repeat steps 5-9 until the confirmation states that the installed device is *Isolated RS-485 Port*. Take note of the COM port assigned to your cable and use this number in ChartConnect3000 to connect to your controller.

